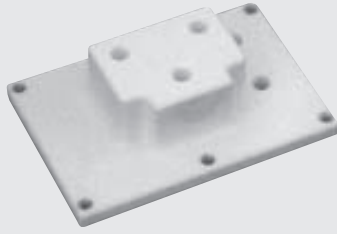


Replacement Parts for Your Mitsubishi Wire-cut Machine



ASP301



ASP307



ASP308



ASP309



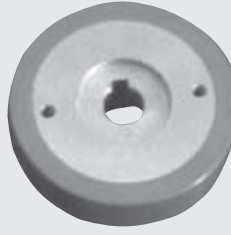
ASP405



ASP406



ASP407



ASP408



ASP456

Catalog No.	Description	Mitsubishi Machine Models
ASP301	Upper Insulating Plate (OEM# X053C162H01)	F, G, H
ASP307	Lower Insulating Plate (OEM# X056C110G51)	SX, CX Series
ASP308	Lower Insulating Plate (OEM# X056C273G51)	FX10
ASP309	Lower Insulating Plate (OEM# X056C356G51)	FX20, FX30
ASP405	Pinch Roller (Gear Type) (OEM# X053C778G51)	HA, SZ, SX Series
ASP406	Capstan Roller (Gear Type) (OEM# X053C779G51)	HA, SZ, SX Series
ASP407	Pinch Roller (OEM# X058D340G51)	FX Series
ASP408	Capstan Roller (OEM# X058D339G51)	FX Series
ASP456	Lower Roller (OEM# X183C442H01)	H, HA, C Series

The parts shown are the most common and popular replacement parts for Mitsubishi machines. However, our manufacturer has many others, so if you need a part not shown, please call Intech EDM Customer Service and tell us what you need; we can probably get it for you.

All Intech EDM replacement parts meet or exceed the original OEM specification.

For flush nozzles, diamond wire guides and power feed contacts for your Mitsubishi machine, please see our current wire-cut catalog.

Intech Knows Parts

INTECH EDM®



INTECH EDM®

U.S. Headquarters (Chicago)

2001 Parkes Drive
Broadview, IL 60155-3952
Tel: 708-681-6110 • 800-323-0295
Fax: 708-681-0447 or 800-325-7584

Western Branch (Los Angeles)

22138 S. Vermont Ave. • Unit G
Torrance, CA 90502
Tel: 310-328-1060 • 800-328-1020
Fax: 310-328-0215

Canadian Branch (Toronto)

6975-D Pacific Circle
Mississauga, Ontario L5T 2H3
Tel: 905-565-6942 • 800-243-5853
Fax: 905-565-6945

Internet

Web Site: www.intech-edm.com
Bulletin Board: www.EDMtalk.com
E-mail: info@intech-edm.com